



Aluminator Retrofit Drain Installation Instructions

MEETS ANSI/SPRI RD-1 STANDARD

For Use With: All types of roof

Job Preparation: Examine the existing water leader to make sure there are no elbows that prevent the drain stem from being fully inserted into the pipe. (If an elbow is present, follow directions on reverse for shortening drain stem.) Insert Pro-Seal into end of drain stem and tighten screws enough to hold the seal in place during installation. Insert assembled drain into existing leader pipe until flange lies flush on roof membrane.

For technical questions please call Marathon @ 800-828-8424



3310 N Benzing Road
Orchard Park, NY 14127

Ph: 800-828-8424

www.marathondrains.com

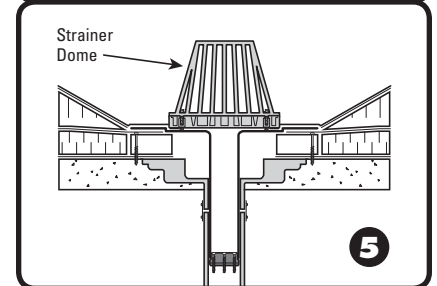
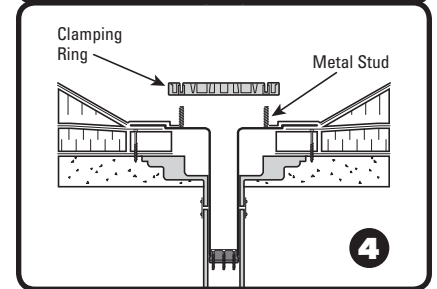
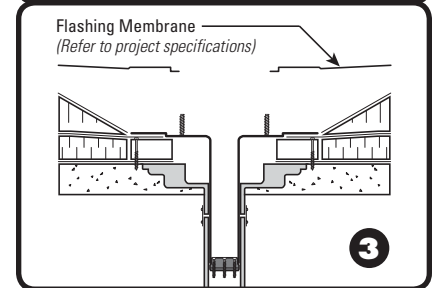
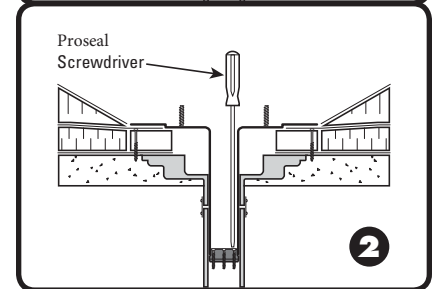
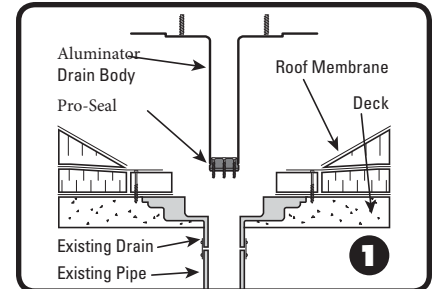
STEP 1 Examine the existing water leader to make sure there are no elbows that prevent the drain stem from being fully inserted into the pipe. (If an elbow is present, follow directions on reverse for shortening drain stem.) Insert Pro-Seal into end of drain stem and tighten screws enough to hold the seal in place during installation. Insert assembled drain into existing leader pipe until flange lies flush on roof membrane.

STEP 2 Alternately tighten seal compression ring screws with Pro-Seal Screwdriver until hand tight. Aluminator Drain body is correctly installed when pressure placed on drain body results in no vertical movement. Do not overtighten the screws.

STEP 3 Secure the drain flange to the roof deck/nailed using a minimum of three pan-head fasteners, evenly spaced around the flange. The flashing membrane must cover and extend past the fastener head. Flashing membrane must be installed per roof membrane manufacturer's detail.

STEP 4 Place clamping ring over metal studs. Install stainless steel nut and lock washers tightening clamping ring against membrane flashing until secure.

STEP 5 Install strainer dome by aligning screw holes with the holes in the clamping ring. Secure with screws provided.



Aluminator Retrofit Drain Installation Instructions

HOW TO SHORTEN AN OLYFLOW METAL RETROFIT DRAIN

In some applications it may be necessary to shorten the drain's stem length if the existing vertical distance is too shallow to accommodate the retrofit drain stem as manufactured.

For technical questions
please call Marathon @
800-828-8424



3310 N Benzing Road
Orchard Park, NY 14127
Ph: 800-828-8424
www.marathondrains.com

STEP

1

Make sure there is at least 4-inches of clear vertical distance in the existing pipe to accommodate the drain. Cut drain stem to desired length and insert Pro-Seal. **Note:** Leave at least 2.5-inches of the drain stem to accommodate the seal. See Figure 1.

STEP

2

Insert the Pro-Seal in the cut drain stem and tighten the seal screws. Once the drain and seal have been assembled, insert it into the existing water leader and complete the assembly following installation steps 2 thru 5 (see reverse).

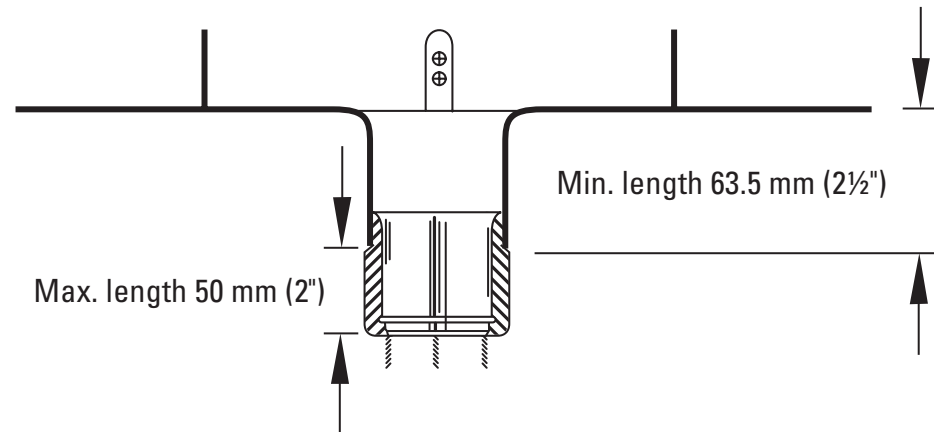


Figure 1: The minimum length of the metal retrofit drain stem with our Pro-Seal Assembly.