



## Copper Century Direct Connect Drain Installation Instructions

**For Use With:** All types of roofing materials

**Job Preparation:** Remove existing Strainer and Clamping Ring. Remove any other existing drain components as required to enable our Copper Century Drain flange to lie flush on roof membrane. Remove any debris in the existing drain pipe that interferes with proper installation.

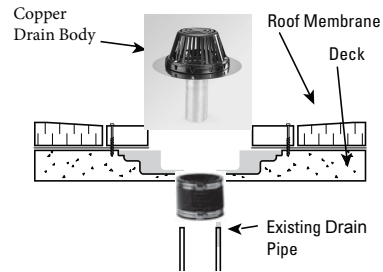


For technical questions please call  
Marathon @ 800-828-8424



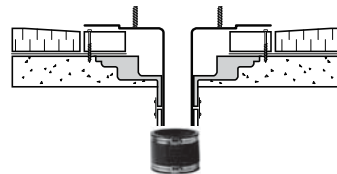
3310 N Benzing Road Orchard Park, NY 14127  
Ph: 800-828-8424  
www.marathondrains.com

#1



Insert Drain and connect drain to existing drain pipe using an approved flexible rubber coupling. Make sure flange is flush on roof membrane.

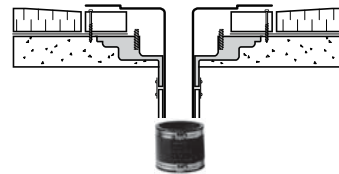
#2



Flexible Rubber Coupling -  
Sold separately

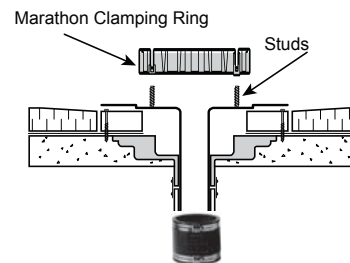


#3



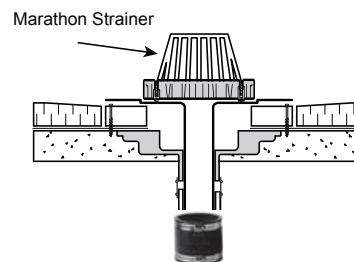
Secure the drain flange to the roof deck using a minimum of three fasteners that are evenly spaced around the flange. The flashing membrane must cover and extend past the fastener head. Flashing membrane must be installed per manufacturer's specifications.

#4



Place Marathon's Clamping Ring over metal studs and install supplied stainless steel nuts and washers. Tighten clamping ring against membrane flashing until secure. Do not over tighten as the possibility of the ring or studs could be damaged.

#5



Install Marathon's Strainer by aligning screw holes with the holes in the clamping ring. Secure with screws provided.