

CARLISLE'S

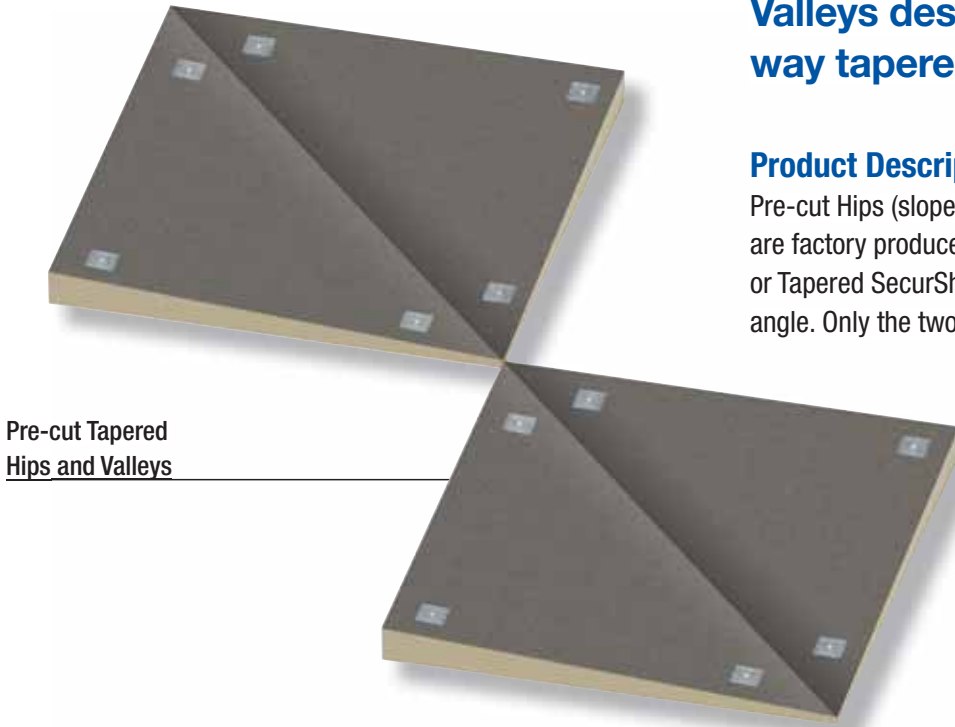
# PRE-CUT HIPS AND VALLEYS

FOR TAPERED POLYISO SYSTEMS

Ready to install, Pre-cut Hips and Valleys designed specifically for four-way tapered polyiso installations.

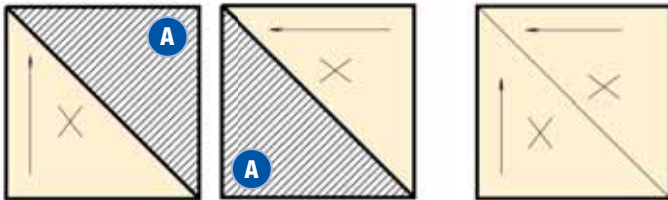
## Product Description

Pre-cut Hips (slope outward) and Pre-cut Valleys (slope inward) are factory produced using two 4' x 4' panels of Tapered HP, or Tapered SecurShield™, and then cut in half at a 45-degree angle. Only the two halves that you need are shipped.



Pre-cut Tapered Hips and Valleys

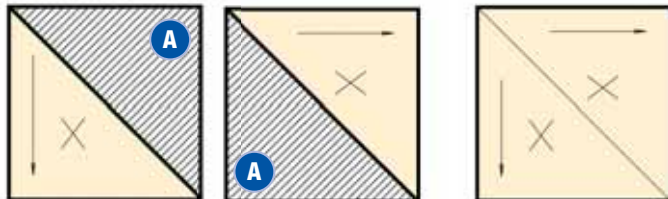
## Valley Field Fabrication



Discard Piece **A** for Valley Fabrication

Completed Valley

## Hip Field Fabrication



Discard Piece **A** for Hip Fabrication

Completed Hip

## System Features and Benefits Include:

- Shipped ready to install – no field cuts required, saves labor
- No waste, reducing material removal fees on jobsite
- Individually packaged and labeled
- Flexibility in design and size: custom-designed to meet your jobsite requirements including slope, minimum and maximum thickness

## Available in Slopes:

- 1/16" (2mm)
- 1/8" (3mm)
- 3/16" (5mm)
- 1/4" (6mm)
- 3/8" (10mm)
- 1/2" (12mm)

Investing in Roofing Solutions for Over 45 Years

800-479-6832 • P.O. Box 7000 • Carlisle, PA 17013 • Fax: 717-245-7053 • www.carlisle-syntec.com

**CARLISLE**

Carlisle Syntec

CARLISLE'S

# PRE-CUT HIPS AND VALLEYS

FOR TAPERED POLYISO SYSTEMS

## Advantages:

- Clean factory-cut edges
- Half a truckload less material shipped to the jobsite
- Half a truck of material not hoisted, stacked and moved
- Saves labor – one truck of material that doesn't have to be cut
- Reduces waste – approximately 15,800 board feet (49 cubic yards) of waste eliminated

## Project Specifications

**Roof Area 401 squares**  
**Tapered Insulation Slope ¼" per foot**  
**½" minimum at drains**

### Field Fabricated Hips and Valleys:

Tapered Quote:	\$72,800
Hoist, stage and move ½ truck of additional waste: 3 man-hours*:	\$150
Labor to cut 1 truck of tapered materials: 84 man-hours*:	\$4,200
Waste Removal Cost: 50 cubic yards:	\$1,100
<b>Total:</b>	<b>\$5,450</b>

### Pre-Cut Hips and Valleys:

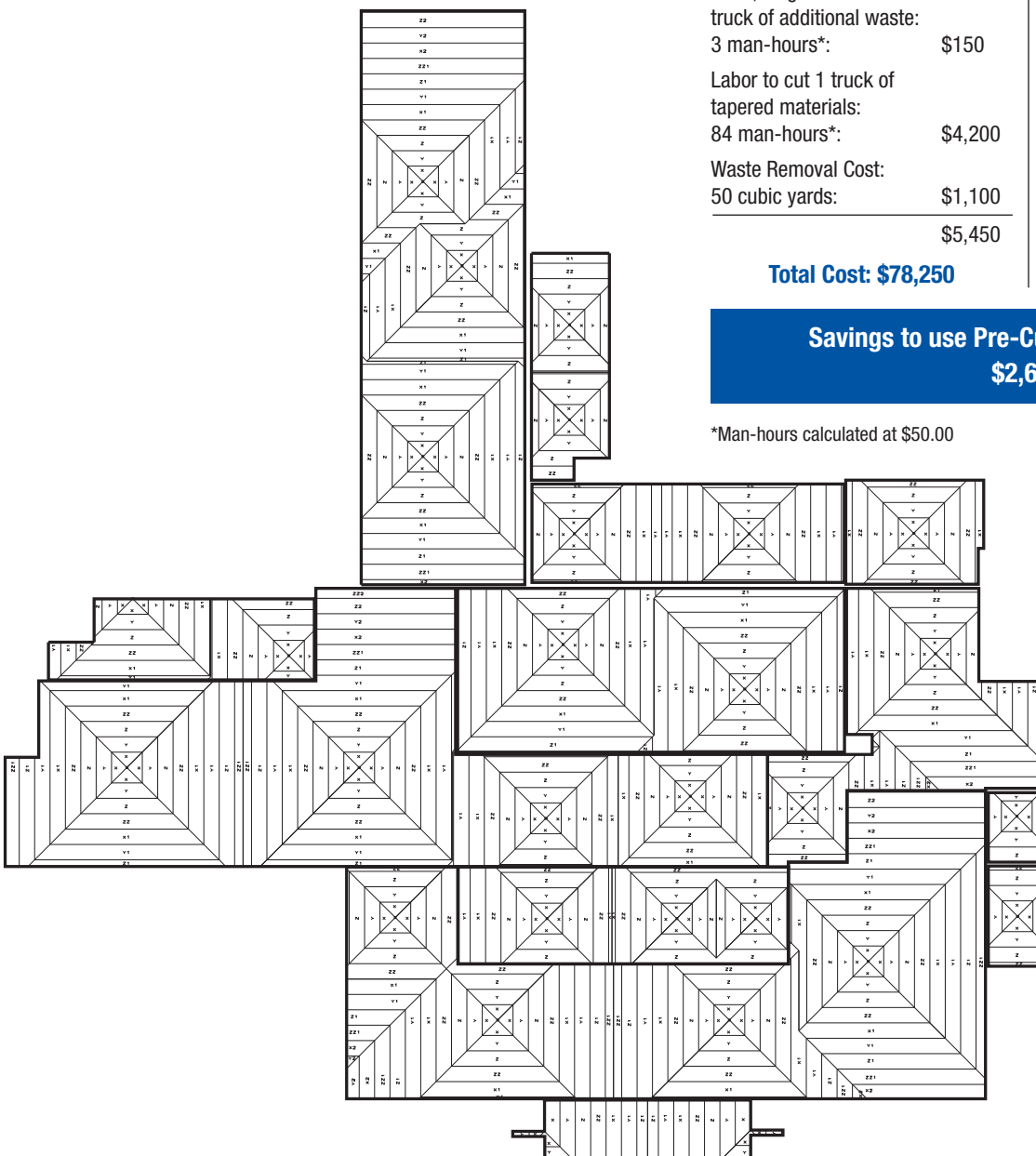
Tapered Quote:	\$72,800
Additional cost for Pre-Cut Hips and Valleys:	\$2,800

**Total Cost: \$78,250**

**Total Cost: \$75,600**

**Savings to use Pre-Cut Hips and Valleys:  
\$2,650**

\*Man-hours calculated at \$50.00



Investing in Roofing Solutions for Over 45 Years

800-479-6832 • P.O. Box 7000 • Carlisle, PA 17013 • Fax: 717-245-7053 • www.carlisle-syntec.com

Carlisle and SecurShield are trademarks of Carlisle.

REPRINT CODE: 605446 - "Pre-cut Hips and Valleys Sell Sheet" – 060111 © 2011 Carlisle.



Carlisle Syntec