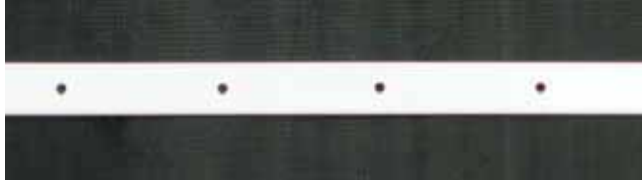


## CARLISLE'S FASTENING AND TERMINATION BARS



### Polymer Fastening Bar

The Polymer Fastening Bar is an engineered polymer bar that's used to mechanically fasten EPDM membranes per Carlisle Specifications. The bar is packaged in a 1" x 250' coil that has pre-punched holes every 3" on center. The bar can be easily cut to any desired length. When installing, make sure that all corners of cut bar are rounded. Install the bar using HP or HP-X Fasteners.

#### Polymer Fastening Bar

##### Typical Properties and Characteristics

Material	Engineered Polymer
Dimensions	1" (25 mm) wide x 250' (76 m) long
Packaging	250 lf (76 m) per carton
Weight	10 lbs. (5 kg) carton



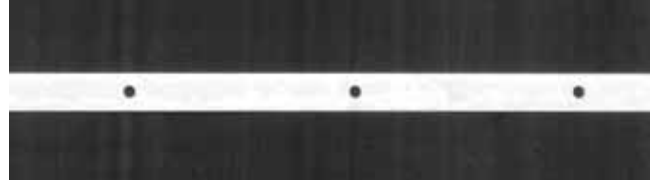
### Termination Bar

The Termination Bar is an extruded aluminum bar that's designed for securing and sealing compression type flashing terminations per Carlisle Specifications. The bar is packaged in 1" x 10' lengths, 500 linear feet per package and has pre-punched holes every 6" on center. This bar features a top edge for ease of applying Carlisle's Lap Sealant for EPDM installations or Universal Single Ply Sealant for TPO installations. The bar can be easily cut to any desired length. When installing, make sure that all corners of cut bar are rounded. Install the bar using HP-X Fasteners, or Term-Bar Nail In Fasteners.

#### Termination Bar

##### Typical Properties and Characteristics

Material	6036-T6 Extruded Aluminum
Dimensions	1" (25 mm) wide x 10' (3 m) long
Packaging	50 pcs; 500 lf (152 m) per carton
Weight	69 lbs. (31 kg) carton



### Metal Fastening Bar

The Metal Fastening Bar is a Galvalume™ coated metal that's used to mechanically fasten EPDM membranes per Carlisle Specifications. The bar is packaged in 1" x 10' lengths, 500 linear feet per package and has pre-punched holes every 6" on center. The bar can be easily cut to any desired length. When installing, make sure that all corners of cut bar are rounded. Install the bar using HP-X Fasteners.

#### Metal Fastening Bar

##### Typical Properties and Characteristics

Material	Galvalume Coated Metal
Dimensions	1" (102 mm) wide x 10' (3 m) long
Packaging	50 pcs; 500 lf (152 m) per carton
Weight	85 lbs. (39 kg) carton



### Sure-Seal Ballast Retaining Bar

The Ballast Retaining Bar is an extruded aluminum bar that's designed as a ballast retaining perimeter securement system, which comes packaged in 4" x 10' lengths, 250 linear feet per package. The ballast retaining bar has pre-punched holes every 6" on center for installation, and also has pre-punched drainage holes every 4" on center.

#### Sure-Seal Ballast Retaining Bar

##### Typical Properties and Characteristics

Material	6036-T6 Extruded Aluminum
Dimensions	4" (102 mm) wide x 10' (3 m) long
Packaging	25 pcs; 250 lf (76 m) per carton
Weight	123 lbs. (56 kg) carton

**Investing in Roofing Solutions for Over 45 Years**

800-4-SYNTEC • P.O. Box 7000 • Carlisle, PA 17013 • Fax: 717-245-7053 • [www.carlisle-syntec.com](http://www.carlisle-syntec.com)

Carlisle, Sure-Seal and Galvalume are trademarks of Carlisle.

REPRINT CODE: 605125- "Fastening and Term Bars Product Data Sheet" - 032510 © 2010 Carlisle.