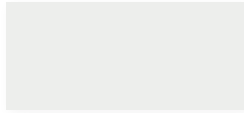
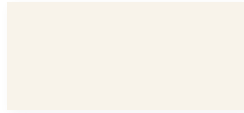


ARCHITECTURAL COLOR PALETTE

Core Colors



Regal White[□]
SR: .70 IE: .85 SRI: 85



Bone White[□]
SR: .68 IE: .86 SRI: 82



Almond^Δ
SR: .63 IE: .86 SRI: 75



Sandstone^Δ
SR: .47 IE: .86 SRI: 53



Surrey Beige^Δ
SR: .35 IE: .86 SRI: 37



Sierra Tan
SR: .30 IE: .85 SRI: 30



Medium Bronze
SR: .26 IE: .84 SRI: 24



Mansard Brown
SR: .29 IE: .86 SRI: 29



Dark Bronze
SR: .26 IE: .84 SRI: 25



Extra Dark Bronze-
SR: .05 IE: .89 SRI: -1



Patina Green
SR: .25 IE: .87 SRI: 24



Hemlock Green
SR: .28 IE: .87 SRI: 28



Classic Green
SR: .25 IE: .86 SRI: 24



Hartford Green-^{**}
SR: .10 IE: .86 SRI: 4



Teal^{**}
SR: .28 IE: .87 SRI: 28



Slate Blue
SR: .27 IE: .86 SRI: 26



Regal Blue^{**}
SR: .30 IE: .86 SRI: 30



Terra Cotta
SR: .39 IE: .85 SRI: 42



Banner Red^{**}
SR: .44 IE: .86 SRI: 49



Colonial Red
SR: .31 IE: .87 SRI: 31



Brandywine^{**}
SR: .27 IE: .87 SRI: 27



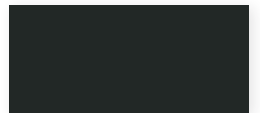
Dove Gray
SR: .49 IE: .87 SRI: 56



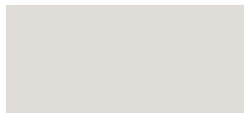
Slate Gray^Δ
SR: .37 IE: .86 SRI: 39



Charcoal
SR: .08 IE: .90 SRI: 4.0



Matte Black
SR: .26 IE: .86 SRI: 25



Stone White^Δ
SR: .62 IE: .85 SRI: 73

^{**} Featuring a pearlescent mica finish; subject to premium pricing. Colors shown are as close to actual colors as allowed by the printing process. Actual metal samples are available. Colors may appear different when viewed at different angles and under different lighting conditions. Due to product improvements, changes and other factors, we reserve the right to change or delete information herein without prior notice.

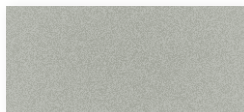


-All Standard Stocked colors are ENERGY STAR[®] approved except Hartford Green, Extra Dark Bronze

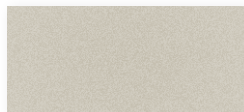
□ LEED[®] compliant for low slope and steep slope
Δ LEED[®] compliant for steep slope only

PVDF - 70% polyvinylidene flouride resin paint system

Mica Color⁺⁺



Bright Silver^Δ S66
SR: .55 IE: .77 SRI: 61



Silversmith^Δ S15
SR: .48 IE: .80 SRI: 52



Champagne S20
SR: .37 IE: .83 SRI: 38



Pewter S11
SR: .36 IE: .85 SRI: 38



Bright Copper^Δ S25
SR: .41 IE: .85 SRI: 44

26 Gauge Low Gloss



Sierra Tan
SR: .46 IE: .87 SRI: 52



Slate Gray
SR: .37 IE: .86 SRI: 39



Medium Bronze
SR: .31 IE: .87 SRI: 32



Dark Bronze
SR: .28 IE: .86 SRI: 27



Colonial Red
SR: .31 IE: .87 SRI: 31



Classic Green
SR: .31 IE: .87 SRI: 32



Hartford Green^{**}
SR: .31 IE: .87 SRI: 32



Slate Blue
SR: .30 IE: .87 SRI: 31



Matte Black
SR: .26 IE: .86 SRI: 25

Acrylic Coated Galvalume also available (not pictured)

877-495-7663
www.sentrigrad.com

| ARCHITECTURAL PVDF | | | | STEEL | | | | ALUMINUM | | | |
|--------------------|-----|-----|------|--------|--------|---------|---------|----------|--------|---------|---------|
| COLOR | SR | IE | SRI | 26GA.¶ | 24GA.† | 22GA.‡▲ | 18GA.‡▲ | .032"† | .040"† | .050"†▲ | .063"†▲ |
| Regal White | .70 | .85 | 85 | | ●■ | ● | ● | ●■ | | | ● |
| Bone White | .68 | .86 | 82 | | ●■ | ● | ● | ●■ | ● | ● | |
| Almond | .63 | .86 | 75 | | ●■ | | | ●■ | ● | ● | |
| Sandstone | .47 | .86 | 53 | | ●■ | ● | | ● | ● | ● | |
| Surrey Beige | .35 | .86 | 37 | | ●■ | ● | | ● | ● | ● | |
| Sierra Tan | .30 | .85 | 30 | LG | ●■ | | | ● | ● | ● | |
| Medium Bronze | .26 | .84 | 24 | LG^ | ●■ | ● | ● | ●■ | ● | ● | ● |
| Mansard Brown | .29 | .86 | 29 | | ●■ | | | ●■ | ● | ● | |
| Dark Bronze | .26 | .84 | 25 | LG^ | ●■ | ● | ● | ●■ | ● | ● | ● |
| Extra Dark Bronze | .05 | .89 | -1.0 | | ●■ | | | ● | | ● | |
| Patina Green | .25 | .87 | 24 | | ●■ | | | ● | | | |
| Hemlock Green | .28 | .87 | 28 | | ●■ | | | ●■ | | | |
| Classic Green | .25 | .86 | 24 | LG | ●■ | ● | | ● | ● | | |
| Hartford Green** | .10 | .86 | 4.0 | LG | ●■ | | | ● | | ● | |
| Teal** | .28 | .87 | 28 | | ● | | | | | | |
| Regal Blue** | .30 | .86 | 30 | | ●■ | | | ● | | | |
| Slate Blue | .27 | .86 | 26 | LG | ●■ | | | ● | | | |
| Terra Cotta | .39 | .85 | 42 | | ●■ | | | ●■ | | | |
| Banner Red** | .44 | .86 | 49 | | ●■ | | | ● | | | |
| Colonial Red | .31 | .86 | 31 | LG | ●■ | | | ● | | | |
| Brandywine** | .27 | .87 | 27 | | ●■ | | | ● | | | |
| Dove Gray | .49 | .87 | 56 | | ●■ | | | ●■ | | ● | |
| Slate Gray | .37 | .86 | 39 | LG^ | ●■ | | | ●■ | ● | | |
| Charcoal | .08 | .90 | 4.0 | | ●■ | ● | | ●■ | ● | ● | |
| Matte Black | .26 | .86 | 25 | LG^ | ●■ | ● | | ●■ | ● | ● | |
| Bright Silver++ | .55 | .77 | 61 | | ●■ | | | ●■ | ● | ● | |
| Silversmith++ | .48 | .80 | 52 | | ●■ | | | ● | | | |
| Champagne++ | .37 | .83 | 38 | | ●■ | | | ● | | | |
| Pewter++ | .36 | .85 | 38 | | ●■ | | | ● | | | |
| Bright Copper++ | .41 | .85 | 44 | | ●■ | | | ●■ | | | |
| Stone White | .62 | .85 | 73 | | ●■ | | | ● | ● | | |

| PAINT PERFORMANCE PROPERTIES | HOT DIPPED GALVANIZED STEEL OR GALVALUME® | ALUMINUM |
|--|--|--|
| Accelerated Weathering ASTM D 4587 (Drew Cycle Weatherometer) ASTM G-154 Chalk Rating Per ASTM D 4214, Method A | Hours: 3,000 Total Chalk: Rating 8 Color: 5 Δ E Hunter units max Hours: 5,000 Total Chalk: Rating 6 Color: 5 Δ E Hunter units max | Hours: 3,000 Total Chalk: Rating 8 Color: 5 Δ E Hunter units max Hours: 5,000 Total Chalk: Rating 6 Color: 5 Δ E Hunter units max |
| Salt Spray ASTM B 117 | Hours: 1,000 Total Scribe: Rating 1/16" (2mm) Field: Rating 10, no blisters | Hours: 3,000 Total Scribe: Rating 10, no creepage Field: Rating 10, no blisters |
| Humidity ASTM D 2247 | Hours: 2,000 Total Rating: 10, no blisters Per ASTM D 714 | Hours: 3,000 Total Rating: 10, no blisters Per ASTM D 714 |
| Formability ASTM D 4145 | 0T-2T | 0T-2T |
| ASTM D 522 (Elongation over 1/8" mandrel) | No cracking No loss of adhesion | No cracking No loss of adhesion |
| Pencil Hardness ASTM D 3363 | HB-2H | HB-2H |
| Abrasion Resistance ASTM D 968 | 55-75 Liters of falling sand | 55-75 Liters of falling sand |
| Specular Gloss ASTM D 523 | 30 +/- 5 at 60° 55 +/- 5 at 85° | 30 +/- 5 at 60° 55 +/- 5 at 85° |
| Reverse Impact ASTM D 2794 | 2 x Metal thickness in inch-lbs. No loss of adhesion. No Cracking. | 1/2 x Metal thickness in inch-lbs. No loss of adhesion. No cracking. |
| Flame Test ASTM E 84 | Class A rated coating | Class A rated coating |

† Standard Coil Width is 48.25"

‡ Standard Coil Width is 44.375"

● Standard Color Option.

■ 40.5" Coil Option is Available.

▲ Additional Lead Times May Apply.

¶ Standard Coil Width 40.5"

LG Refers to Reflective Ratings

^ Offered in 27-1/2" coil width

++ Denotes Mica Colors

** Denotes exotic colors and are subject to premium pricing

NOTES ON AVAILABILITY:

- 24ga, .032, .040, .050, .063 are standard 48.25" in width. 22g and 18ga are 44.375" in width. 26ga is 40.5" standard width for painted items.
- Protective stippable film is standard on flat sheets.
- Mica++ and exotics ** are subject to premium pricing. Due to the unique effect of the Mica finishes, appearances may vary from batch to batch.
- Standard inventory is non-embossed. Embossed requests are to be quoted.
- Unpainted, acrylic coated, aluminum-zinc alloy steel (AZ55) is maintained in 26ga 20", 26ga 27-1/2", 26ga 24", 24ga 20", 24ga 27-1/2", 24ga 24" slit coils and 26ga 48"x120", 24ga 48"x120" flat sheets (no strippable film).
- All colors are supplied in Medium Gloss (20-35 at 60 deg). Low gloss on non 26ga available subject to minimum coating run.
- This color chart is subject to change without notice.

SentriClad® standard architectural colors and finishes feature 70% polyvinylidene fluoride (PVDF) resin paint systems to ensure long term color retention and performance. Custom colors and finishes are also available. Minimum quantities and set up charges may apply.

877-495-7663 www.sentrigrard.com



PROUDLY FINISHED WITH
SHERWIN-WILLIAMS.
Coil Coatings

SRI RATINGS ARE FOR GALVALUME ONLY.
ALUMINUM RATINGS ARE LISTED ON
WWW.SENTRIGARD.COM